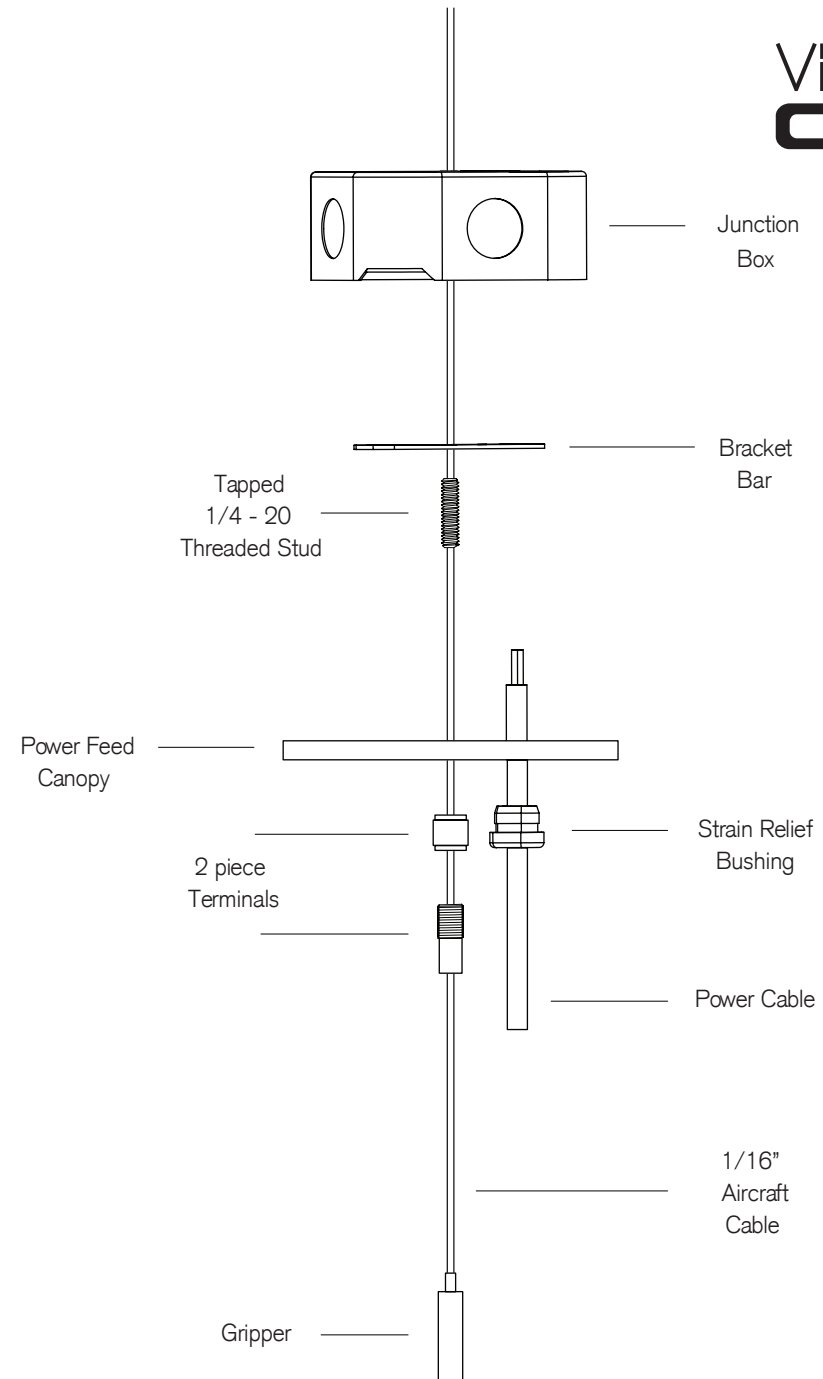


## CUBE PENDANT - STEP ONE INSTALL POWER FEED MOUNT

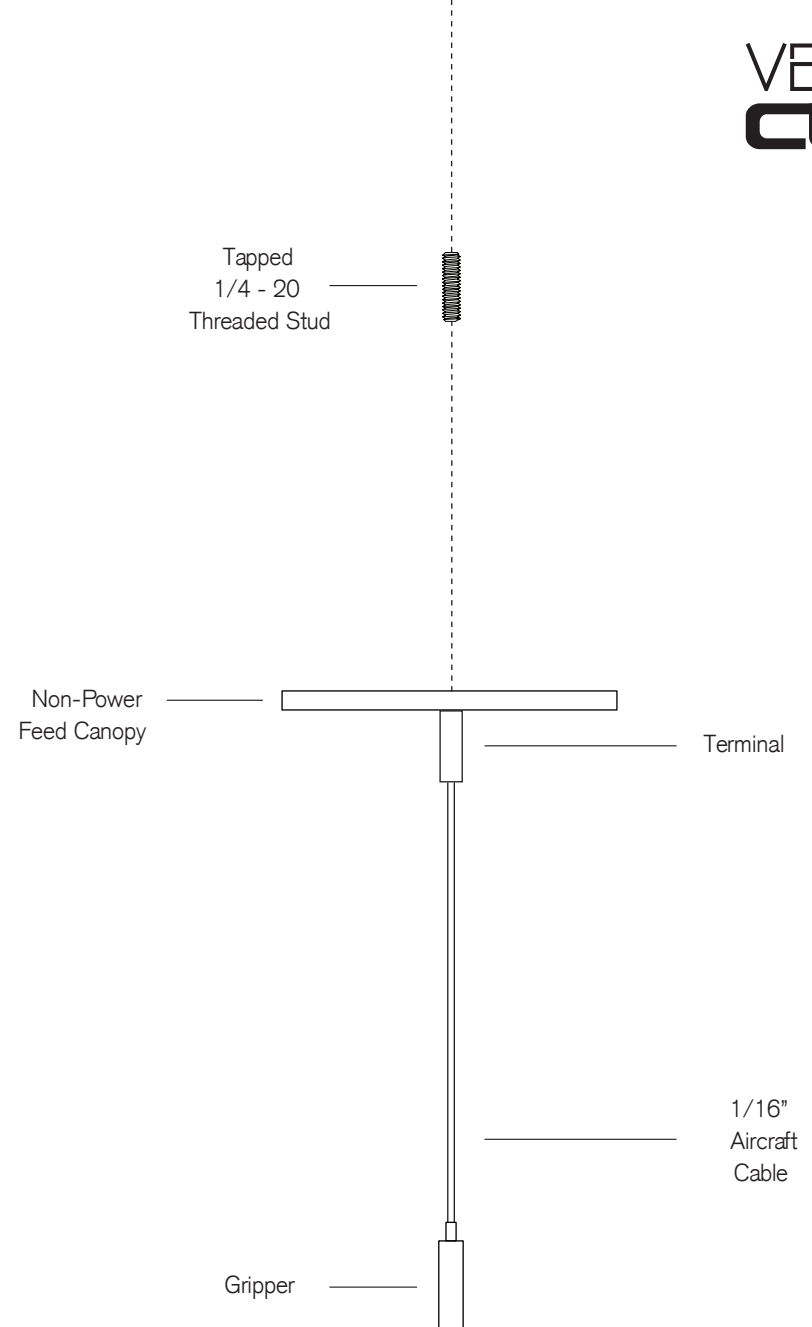
- All electrical circuits should be turned off before starting work.
- Please follow local and national electrical codes.

- Install junction box (not included) at appropriate location.
- Feed power wires into junction box and ground appropriately.
- Install Bracket Bar to junction box using ground screws.
- Install Threaded Stud into Bracket Bar.
- Feed Aircraft Cable and through Terminals and Threaded Stud.
- Thread Canopy on to aircraft cable.



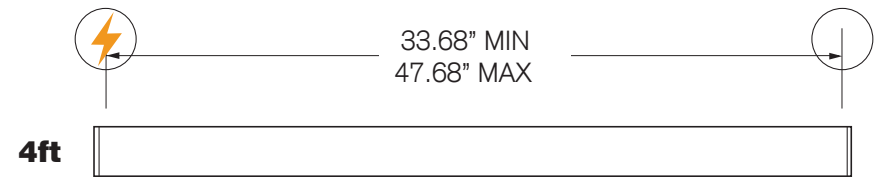
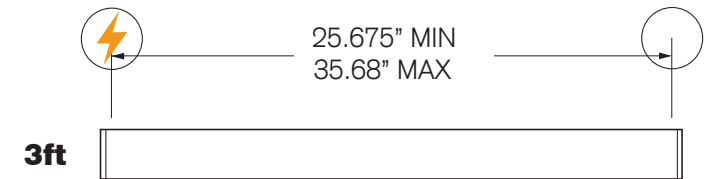
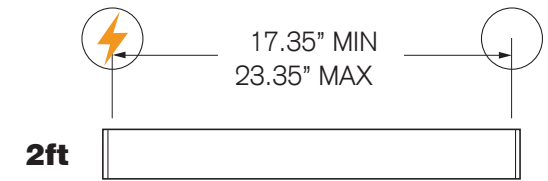
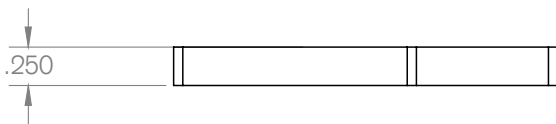
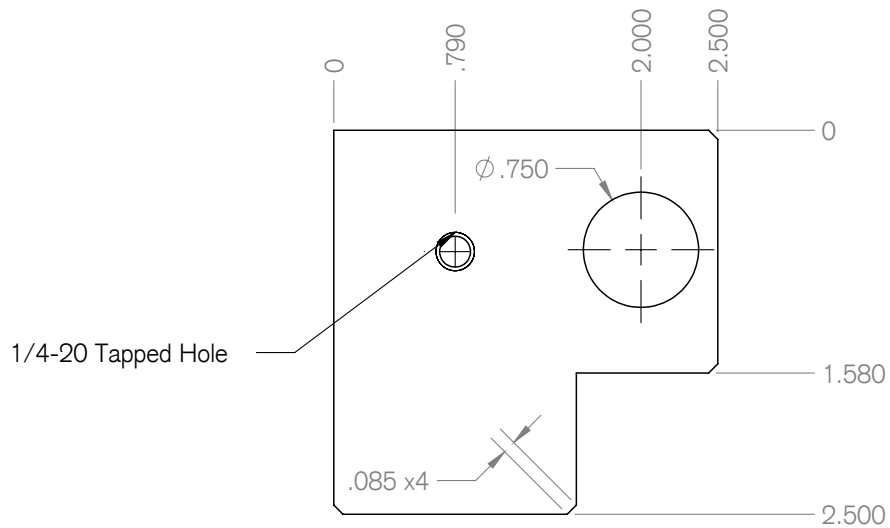
## CUBE PENDANT - STEP TWO INSTALL NON-POWER FEED MOUNT

- A. - Install threaded stud (not included) into ceiling.
- B. - Install non-power feed canopy onto threaded stud.
- C. - Install aircraft cable and terminal to hold canopy in place.



## CUBE PENDANT - STEP THREE HANG LUMINAIRE

- A.** - Install 4 cable grippers into the corner brackets of luminaire.
- B.** - Lift luminaire into place, and insert aircraft cables into cable grippers.
- C.** - Adjust height of luminaire and level. Luminaire can be raised by pulling cable through the gripper and can be lowered by depressing the top cylinder on the gripper which pulls the luminaire down.
- D.** - Make sure all parts are tightened and insert strain relief into canopy.



 = Power Feed Canopy

 = Non-Power Feed Canopy