



Client: \_\_\_\_\_  
Project Name: \_\_\_\_\_

Order #: \_\_\_\_\_  
Type: \_\_\_\_\_ Qty: \_\_\_\_\_

## Pendant Luminaire featuring UGR < 19

### Performance Data

CRI

80+

CCT

2700K, 3000K, 3500K, 4000K

### Projected Lifetime

165,000 Hours (L70)

105,000 Hours (L80)

### Dimming

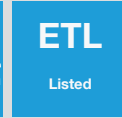
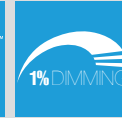
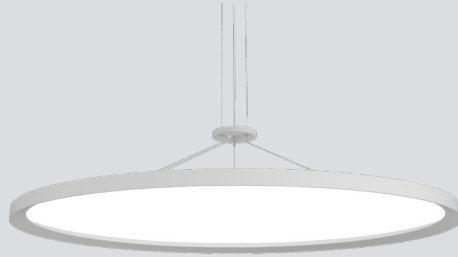
0-10V Dimming Standard,  
100% down to 1%

### Operating Temperature

-40°C to +50°C

### ETL Listed

Suitable for dry and damp  
locations



### Description

The Circa is a unique round flat panel luminaire designed to provide smooth, dispersed illumination for modern interior spaces. Featuring a low-profile aluminum construction, the Circa is convenient and durable for installation in ceilings with a low plenum space. The Circa incorporates innovative Flat Optix™ that are engineered to eliminate glare issues that have become increasingly prevalent among LED luminaires as efficacy has increased over time. Featuring a Unified Glare Rating (UGR) of less than 19, Flat Optix™ refract light to eliminate glare and improve comfort for inhabitants. Constructed with high efficacy LED chipsets and an edge-lit design, the Circa delivers well-balanced light output with a frosted acrylic lens and is ideal for specification across a variety of commercial and institutional spaces including open offices, classrooms, themed areas, retail spaces and healthcare facilities.

### Features

#### PERFORMANCE

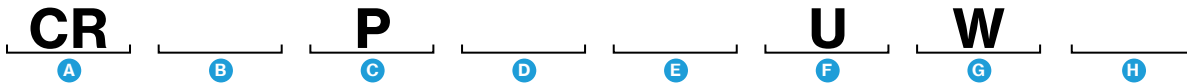
- Delivers up to 6240 lumens, up to 109 lm/W
- 3-Way adjustable LED driver provides field adjustable light output (default settings noted on Page 2 lumen chart)

#### PHYSICAL

- Sizes: 18", 24", and 36" diameters
- Driver box: White, CRS cylinder that mounts directly to an 4"

Octagonal and 3" Octagonal junction box. Dimensions: 8" Dia. x 1.5" high

- Luminaire: Die cast aluminum body with powder coat finish. Powder Coated CRS top plate. Flat Optix™ lens with micro prismatic conical structure. UGR<19
- Suspension: 1/16" Aircraft cable (59.1" length), 3 mounting points attach to luminaire and driver box.
- Weight: 11lbs (18"), 13lbs (24"), and 20lbs (36")



### Ordering Information

#### A FIXTURE SERIES

CR Circa Luminaire

#### B DIAMETER

18	18"
24	24"
36	36"

#### C MOUNTING STYLE

P Pendant

#### D WATTAGE/LUMENS - 18"

30 30W/3150<sup>1</sup>

#### WATTAGE/LUMENS - 24"

40 40W/4260<sup>1</sup>

#### WATTAGE/LUMENS - 36"

60 60W/6240<sup>1</sup>

#### E CCT

27	2700K
30	3000K
35	3500K
40	4000K

#### F VOLTAGE

U 120-277V

#### G FINISH

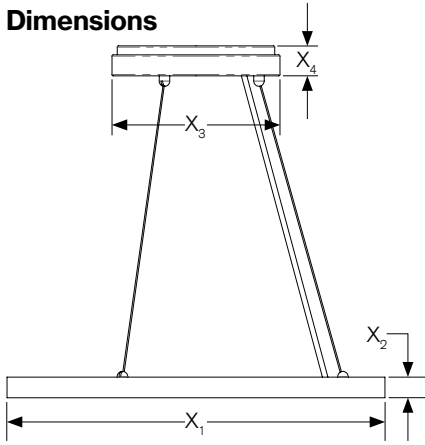
W White

#### H OPTIONS

E	Emergency
ES1	Lutron LDE1 Series EcoSystem 1% Dimming with Soft On Fade to Black

<sup>1</sup> Delivered Lumens (4000K) - Please see Page 2 for full lumen chart.

**Dimensions**



	Inches		
	Size 18"	Size 24"	Size 36"
<b>X<sub>1</sub></b>	18"	24"	36"
<b>X<sub>2</sub></b>	1"	1"	1"
<b>X<sub>3</sub></b>	8"	8"	8"
<b>X<sub>4</sub></b>	1.5"	1.5"	1.5"

**Photometrics**

Coefficients of Utilization  
Effective Floor Cavity Reflectance: 20%

RCC %:	80				70				50				30				10				0			
RW %:	70	50	30	0	70	50	30	0	50	30	20	0	50	30	20	0	50	30	20	0	0			
RCR: 0	1.19	1.19	1.19	1.19	1.16	1.16	1.16	1.00	1.11	1.11	1.11	1.06	1.06	1.06	1.02	1.02	1.02	1.00	1.00	1.00	1.00	1.00		
1	1.10	1.06	1.03	1.00	1.08	1.04	1.01	.88	1.00	.97	.95	.96	.94	.92	.93	.91	.89	.87	.87	.87	.87	.87		
2	1.02	.95	.89	.84	.99	.93	.87	.77	.89	.85	.81	.86	.82	.79	.83	.80	.77	.75	.75	.75	.75	.75		
3	.94	.85	.77	.72	.92	.83	.76	.67	.80	.75	.70	.78	.73	.69	.75	.71	.68	.66	.66	.66	.66	.66		
4	.87	.76	.68	.62	.85	.75	.67	.59	.72	.66	.61	.70	.65	.60	.68	.63	.59	.57	.57	.57	.57	.57		
5	.80	.69	.61	.55	.78	.68	.60	.52	.66	.59	.54	.64	.58	.53	.62	.57	.53	.51	.51	.51	.51	.51		
6	.75	.63	.54	.48	.73	.62	.54	.47	.60	.53	.48	.58	.52	.47	.57	.51	.47	.45	.45	.45	.45	.45		
7	.70	.57	.49	.43	.68	.56	.49	.42	.55	.48	.43	.53	.47	.43	.52	.47	.42	.41	.41	.41	.41	.41		
8	.65	.52	.45	.39	.64	.52	.44	.38	.51	.44	.39	.49	.43	.39	.48	.43	.38	.37	.37	.37	.37	.37		
9	.61	.48	.41	.36	.60	.48	.40	.35	.47	.40	.35	.46	.40	.35	.45	.39	.35	.33	.33	.33	.33	.33		
10	.57	.45	.37	.32	.56	.44	.37	.32	.43	.37	.32	.43	.36	.32	.42	.36	.32	.30	.30	.30	.30	.30		

**Zonal Lumen Summary**

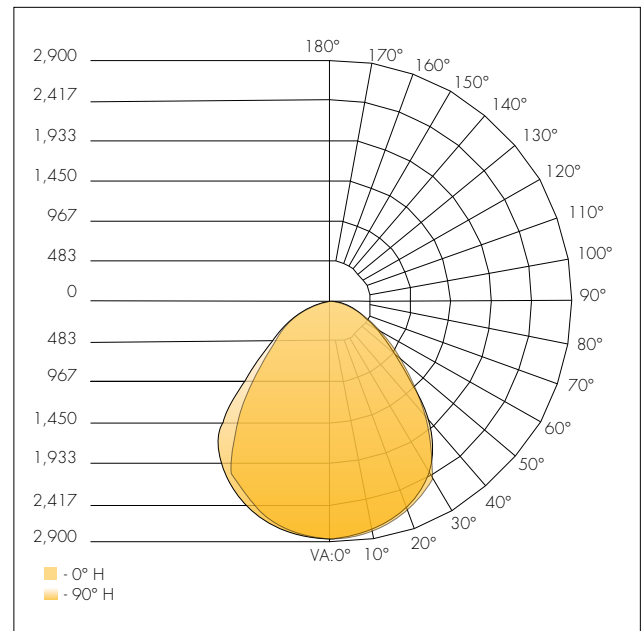
Zone	Lumens	%Lamp	%Luminaire
0-30	2,205.9	36.1%	36.1%
0-40	3,544.4	57.9%	57.9%
0-60	5,365.6	87.7%	87.7%
60-90	750.8	12.3%	12.3%
0-90	6,116.4	100%	100%

**Lumen Chart:**

4000K Outputs	HIGH	MID	LOW
<b>18" DIAMETER</b>			
Set at 30W default	N/A	30W / 3150	20W / 2120
<b>24" DIAMETER</b>			
Set at 40W default	40W / 4160	30W / 3150	20W / 2120
<b>36" DIAMETER</b>			
Set at 60W default	60W / 6240	50W / 5250	40W / 4240

For other CCT outputs, multiply by below factors  
 3500K: 0.98  
 3000K: 0.94  
 2700K: 0.93

Model 36" 60W 3500K



Delivered Lumens: 6,116  
CRI: 85

## Unified Glare Rating (UGR)

### DECO LED Flat Panel with Flat Optix™ Lens:

- Light is redirected from 60° to 90° degrees of luminaire, UGR <19
- Conical structures built into the lens minimize high angle glare
- Allows for increased efficacy, rather than lumen output glaring at occupants
- High efficiency and energy saving
- Protection class: IP44 Damp Location Rated
- Increased productivity



□ = Volumetric flat panel with micro-prismatic lens will reduce glare going into the occupant's eyes  
 — = 90°    ..... = 60°

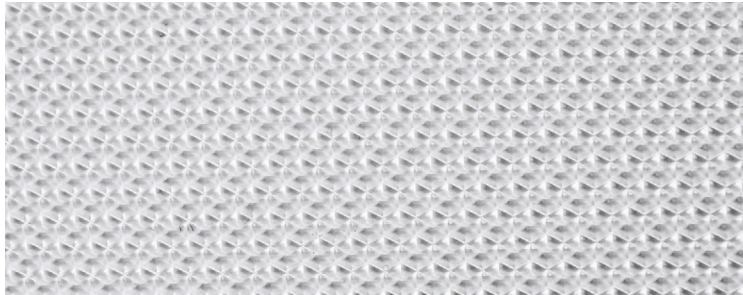
### Standard LED Flat Panel:

- Harsh glare at viewing angles above 60°, UGR >24
- Wide beam angle at 120°
- Uncomfortable glare
- Reduction in visibility caused by intense light source in field of view
- Protection class: IP22 protects only from objects greater than 12 millimeters
- Loss of productivity



■ = High glare flat panel makes occupant's eyes feel uncomfortable  
 — = 90°    ..... = 60°

## Flat Optics™ Detail



Micro-prismatic technology redirects high-angle light, reducing visual glare. The light above 60° is suppressed to improve the Unified Glare Rating (UGR). This allows for the luminaire to be IESNA RP1-04 & EN12464 compliant, which are standards for office and indoor lighting.

## UGR Criteria

UGR:	Hopkinson's Criterion:
<10	Imperceptible
<13	Just Perceptible
<16	Perceptible
<19	Acceptable
>22	Unacceptable
>25	Just Uncomfortable
>28	Uncomfortable

Micro-prismatic conical structures provide the most optimal luminance of a fixture from any viewing angle. The UGR rating of less than 19 provides the most acceptable glare for task lighting.

## Lutron Options

- ES1** EcoSystem digital control, Hi-lume 1% EcoSystem LED driver with Soft-on, Fade-to- Black. Ideal for conference rooms, restaurants, lobbies, ballrooms, and lecture halls. Benefits include: All benefits of the ES5 series plus beautiful, smooth flicker-free dimming down to 1% and a Soft-on, Fade-to- Black™ feature, which provides an incandescent-like experience when transitioning from off to 1% and vice versa.