

IMPORTANT SAFETY INSTRUCTIONS

- To reduce the risk of death, personal injury or property damage from fire, electric shock, falling parts, cuts/abrasions, and other hazards please read all warnings and instructions included with and on the fixture box and all fixture labels.
- Before installing, servicing, or performing routine maintenance upon this equipment, follow these general precautions.
- Installation and service of luminaires should be performed by a qualified licensed electrician.
- Maintenance of the luminaires should be performed by person(s) familiar with the luminaires' construction and operation and any hazards involved. Regular fixture maintenance programs are recommended.
- It will occasionally be necessary to clean the outside of the refractor/lens. Frequency of cleaning will depend on ambient dirt level and minimum light output which is acceptable to user. Refractor/lens should be washed in a solution of warm water and any mild, non-abrasive household detergent, rinsed with clean water and wiped dry. Should optical assembly become dirty on the inside, wipe refractor/lens and clean in above manner, replacing damaged gaskets as necessary.
- DO NOT INSTALL DAMAGED PRODUCT! This luminaire has been properly packed so that no parts should have been damaged during transit. Inspect to confirm. Any part damaged or broken during or after assembly should be replaced.
- Recycle: For information on how to recycle LED electronic products, please visit www.epa.gov.
- These instructions do not purport to cover all details or variations in equipment nor to provide every possible contingency to meet in connection with installation, operation, or maintenance. Should further information be desired or should particular problems arise which are not covered sufficiently for the purchaser's or owner's purposes, this matter should be referred to Deco Lighting.



WARNING RISK OF ELECTRICAL SHOCK

- Disconnect or turn off power before installation or servicing.
- Verify that supply voltage is correct by comparing it with the luminaire label information.
- Make all electrical and grounded connections in accordance with the National Electrical Code (NEC) and any applicable local code requirements.
- All wiring connections should be capped with UL approved recognized wire connectors.



WARNING RISK OF RISK OF BURN

- Allow lamp/fixture to cool before handling. Do not touch enclosure or light source.
- Do not exceed maximum wattage marked on luminaire label.
- Follow all manufacturer's warnings, recommendations and restrictions for: driver type, burning position, mounting locations/methods, replacement and recycling.



CAUTION RISK OF INJURY

- Wear gloves and safety glasses at all times when removing luminaire from carton, installing, servicing or performing maintenance.
- Avoid direct eye exposure to the light source while it is on.



CAUTION RISK OF FIRE

- Keep combustible and other materials that can burn, away from lamp/lens.
- Do not operate in close proximity to persons, combustible materials or substances affected by heat or drying.



CAUTION RISK OF INJURY

- Never connect components under load.
- Do not mount or support these fixtures in a manner that can cut the outer jacket or damage wire insulation.
- Unless individual product specifications deem otherwise: Never connect an LED product directly to a dimmer packs, occupancy sensors, timing devices, or other related control devices. LED fixtures must be powered directly off a switched circuit.
- Unless individual product specifications deem otherwise: Do not restrict fixture ventilation. Allow for some volume of airspace around fixture. Avoid covering LED fixtures with insulation, foam, or other material that will prevent convection or conduction cooling.
- Unless individual product specifications deem otherwise: Do not exceed fixtures maximum ambient temperature.
- Only use fixture in its intended location.
- LED products are Polarity Sensitive. Ensure proper Polarity before installation.
- Electrostatic Discharge (ESD): ESD can damage LED fixtures. Personal grounding equipment must be worn during all installation or servicing of the unit.
- Do not touch individual electrical components as this can cause ESD, shorten lamp life, or alter performance.
- Some components inside the fixture may not be serviceable. In the unlikely event your unit may require service, stop using the unit immediately and contact an ABL representative for assistance.
- Always read the fixtures complete installation instructions prior to installation for any additional fixture specific warnings.

This device complies with Part 15 of the FCC Rules. Operation is subject to the following two conditions: (1) this device may not cause harmful interference, and (2) this device must accept any interference received, including interference that may cause undesired operation.

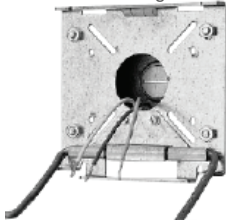
Tools Required:

#2 philips type and flathead screwdriver. 1/8" and 3/16" allen wrench.

Instructions

1. These steps below are for mounting over a standard recessed junction box. Position mounting plate over j-box. The mounting plate may be attached to the j-box for alignment only, it should not be relied upon for structural support. Ensure integral support rod on mounting plate is in a downward position and bubble level is at the top. Level mounting plate prior to tightening using integral bubble level. Secure to wall using (4) 1/4" diameter fasteners (not provided). See figure 1.

Figure 1
Wall Mounting Plate



Integral support rods

2. With the door frame facing up, locate the 2 set screws (figure 2a).

Loosen the (2) set screws with 1/4"-20 x 1/2" hex socket so that they are flush with the black finned plate (figure 2b). The screws may be removed and discarded when mounting door frame up.

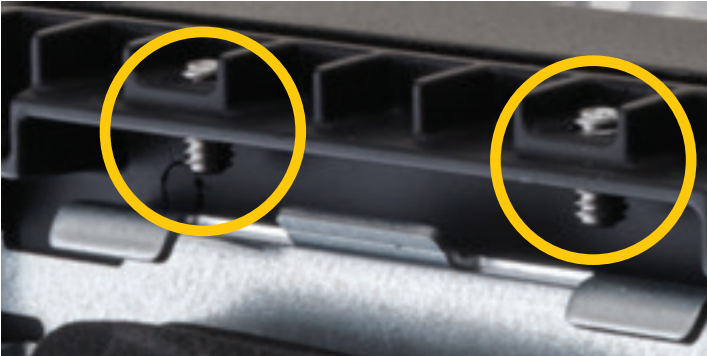


Figure 2a

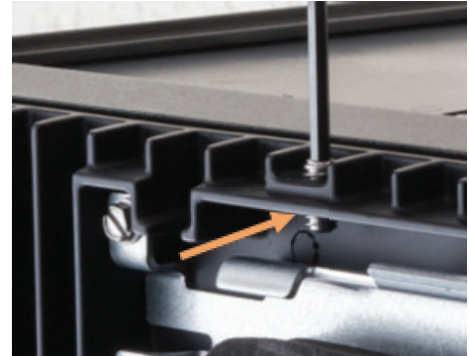


Figure 2b

For door frame up only: Install 1/4"-20 x 3/4" hex socket cap screws (provided in pre-packaged hardware) into the top of the mounting plate (replacing 1/4"-20 screws from step 1), turning twice is sufficient.

Note--These fixtures are listed for DAMP location ONLY when installed in the lens up orientation unless the WLU option has been ordered. Installation of the fixture in any position other than what is indicated with the supplied instructions will void all warranties.

3. To attach the fixture to the integral support rods, face the wall, grip the fixture on the sides with the top towards you, insert the support rod on one side of the wall mounting plate into the corresponding slot in the fixture side mounting bracket (figure 3a).

Lift the other side of the fixture up (so it is slanted) in order to insert the other support rod into the top of the corresponding slot in the fixture side mounting bracket. (See figure 3b). The support rods will be opposite corners of the fixture bracket.

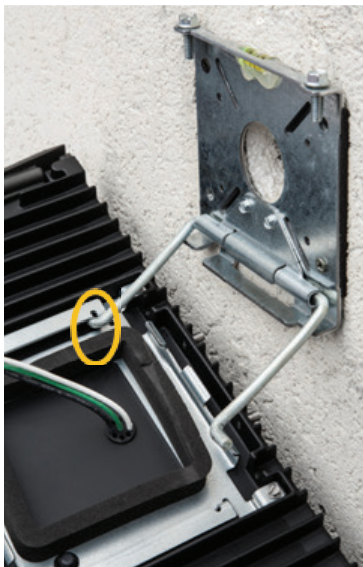


Figure 3a

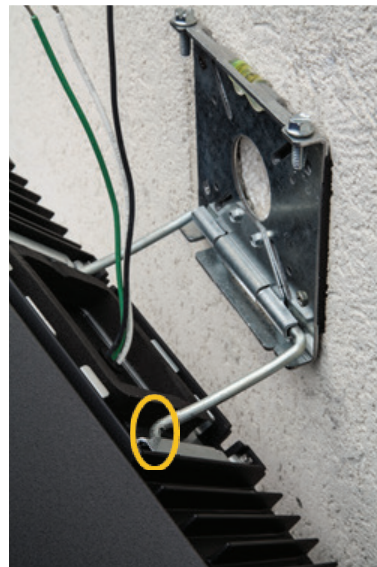


Figure 3b

4. Slide fixture down and align so that the fixture is straight and let fixture hang off the integral support rods (figure 4).

Note: Protect the fixture surface from the wall surface so as not to scratch or mar the fixture finish.



Figure 4

5. Do not make any connections with energized supply leads. Ensure the line voltage at the fixture is correct. Make all necessary wiring connections ensuring that wires are not being pinched. Place wires inside junction box (figure 5).



Figure 5

5. Do not make any connections with energized supply leads. Ensure the line voltage at the fixture is correct. Make all necessary wiring connections ensuring that wires are not being pinched. Place wires inside junction box (figure 5).

6. Lift fixture and place the bottom hook of the fixture mounting bracket onto the bottom center slot of the wall mounting plate (see circle in figure 6a).

Keep pressure on the bottom of the fixture against the wall, lift up slightly and insert the top hooks of the fixture mounting bracket into the top slots of the wall mounting plate (see circles in 6b). Make sure wires are inside the junction box and not pinched.

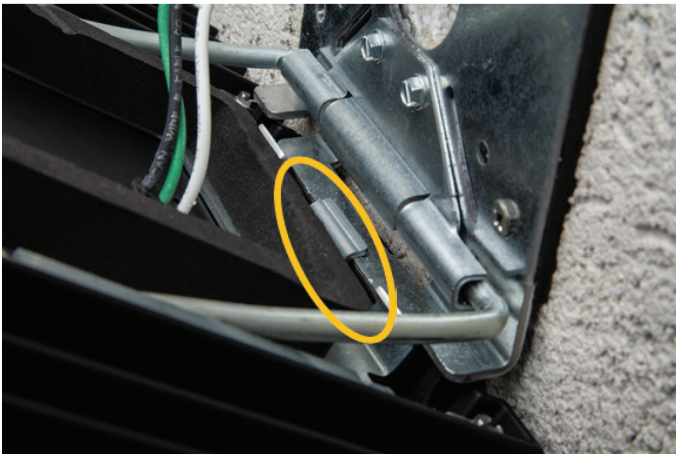


Figure 6a



Figure 6b

7. Slide the fixture into place by firmly applying pressure against the fixture onto the wall mounted plate and pushing down. Verify the fixture is securely seated and parallel to the wall (figure 7).



Figure 7

8. Door frame down: Tighten the (2) hex socket set screws on the bottom of the housing with an 1/8" allen wrench evenly (10-15 in. lbs maximum). See figure 8a and 8b.

Door frame up: Tighten the (2) hex socket cap screws (installed in step 2) into the housing with an 3/16" allen wrench evenly (10-15 in. lbs maximum).



Figure 8a



Figure 8b

Troubleshooting: If this fixture fails to operate properly, check to make sure:

- The fixture is wired correctly.
- The fixture is grounded correctly.
- The line voltage at the fixture is correct. If all these variables have been checked and the fixture still does not operate as specified, contact your local Deco Lighting distributor.