



D807-LED

Cylinder Spider Luminaire

Client: _____ Order #: _____
 Project Name: _____ Type: _____ Qty: _____



Performance Data

CRI

70+ (5000K)
 80+ (4000K and lower)

CCT

3000K, 3500K, 4000K, 5000K

Projected Lifetime

100,000+ Hours (L70)

Dimming

0-10V dimming standard,
 100% down to 10%

Operating Temperature

-40°C to +55°C Ambient

DSKY Dark Sky Compliant	10 Yr Warranty Including Labor	USA Buy American Act Compliant
--------------------------------------	---	---

Description

The Cylinder Spider luminaire sets the standard in flexibility for architectural area lighting. Cylinder shaped, rugged, heavy-gauge, spun aluminum housing, and fully gasketed for weathertight integrity. Standard finish is dark bronze, but other architectural colors are available. The Cylinder Spider luminaire offers unparalleled variety in one family of fixtures. Ideal for streets, parking lots, and surrounding areas.

Features

- Spun-aluminum top is finished in powder coat.
- Premium segmented optical modules.
- Heavy-duty, aluminum frame is the main load-bearing structure for arm, yoke or spider mountings.
- Standard color is bronze; also available in black and white. Contact factory for custom finishes.
- Dark Sky compliant when ordered at 3000K

D807-LED



Ordering Information

A FIXTURE SERIES

D807-LED	Cylinder Spider Luminaire
----------	---------------------------

B WATTAGE/LUMENS

40	40W/4370 ³
60	60W/6550 ³
80	80W/8740 ³
120	120W/13110 ³

C CCT

30	3000K
35	3500K
40	4000K
50	5000K ⁴

D VOLTAGE

UNV	120-277V
347	347V
480	480V
(Step-Down Transformer used for 347-480V)	

E OPTICS

T2	Type 2
T3	Type 3
T5	Type 5 ¹

F MOUNTING

PT	Post Top 2 3/8" Tenon
PT3	Post Top 3" Tenon

G FINISH

BZ	Bronze ¹
BL	Black
WH	White
CU	Custom ²

H OPTION

PH	Photocell
M	Motion Sensor
D	Dimming

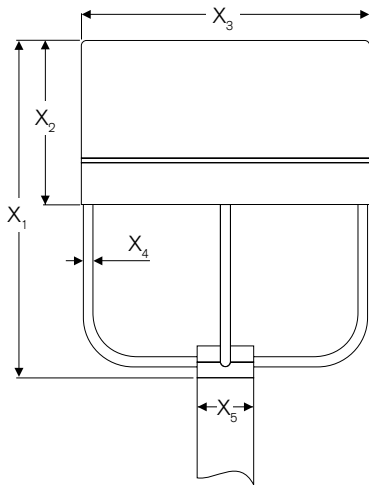
¹ Standard for fixture

² Contact factory for custom finish

³ Delivered Lumens (5000K Type 5 Optics)

⁴ Standard Color Temp

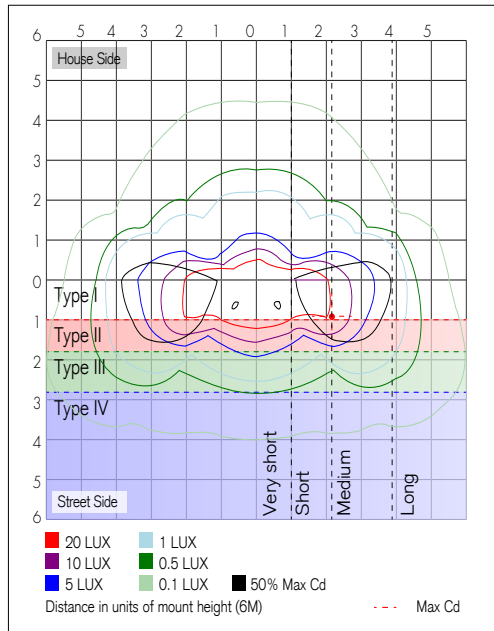
Dimensions



	Inches
X ₁	21
X ₂	10.23
X ₃	18
X ₄	0.62
X ₅	3.50

Photometrics

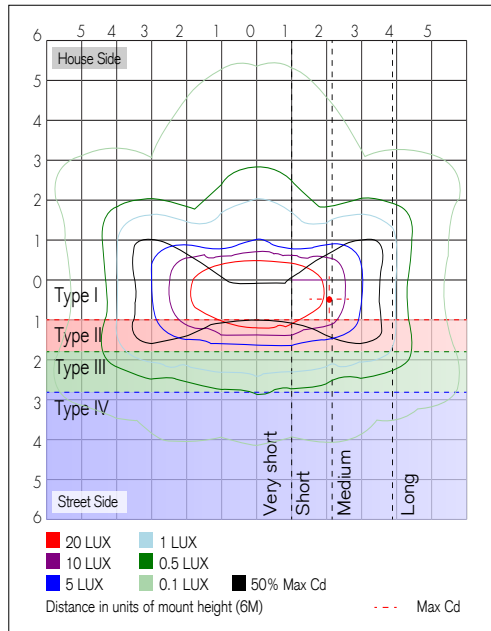
120W 4000K Type 2 Distribution
Isolux-Plot



Zonal Lumen Summary

Zone	Lumens	%Luminaire
0-30	2,811.4	19.2%
0-40	4,893.1	33.4%
0-60	9,660.7	66%
60-90	4,964.2	33.9%
70-100	2,011.0	13.7%
90-120	12.9	0.1%
0-90	14,625.0	99.9%
90-180	12.9	0.1%
0-180	14,637.8	100%

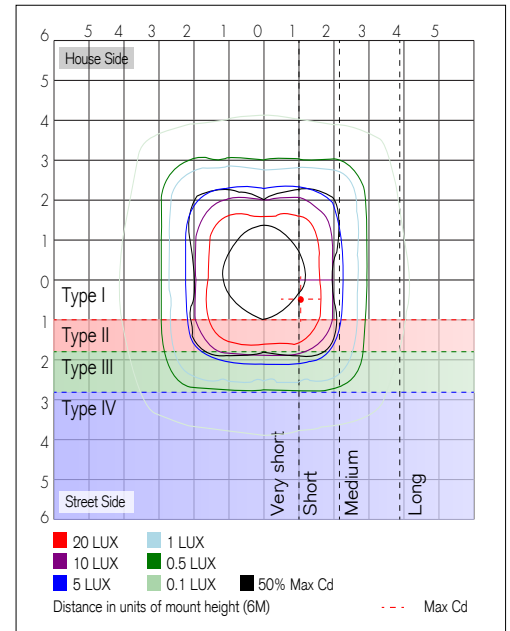
120W 4000K Type 3 Distribution
Isolux-Plot



Zonal Lumen Summary

Zone	Lumens	%Luminaire
0-30	2,936.7	20.1%
0-40	5,118.7	35%
0-60	10,104.1	69%
60-90	4,528.8	30.9%
70-100	1,876.4	12.8%
90-120	5.6	0%
0-90	14,632.9	100%
90-180	5.6	0%
0-180	14,638.6	100%

120W 4000K Type 5 Distribution
Isolux-Plot



Zonal Lumen Summary

Zone	Lumens	%Luminaire
0-30	1,118.9	7.7%
0-40	2,504.0	17.3%
0-60	9,859.0	67.9%
60-90	4,649.9	32%
70-100	767.6	5.3%
90-120	6.4	0%
0-90	14,508.8	100%
90-180	6.4	0%
0-180	14,515.3	100%