



# DRT-6-LED

## DECO DRT-6 Lumens+

Client: \_\_\_\_\_ Order #: \_\_\_\_\_  
Project Name: \_\_\_\_\_ Type: \_\_\_\_\_ Qty: \_\_\_\_\_

### Performance Data

CRI  
94

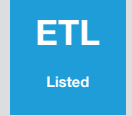
CCT  
4000K

Projected Lifetime  
120,000 Hours (L70)

Dimming  
120V Triac Dimming Standard

Operating Temperature  
-20°C to +45°C Ambient

ETL Listed  
Suitable for dry and damp locations



### Description

The DECO DRT-6 Lumen+ unit is an six-inch LED recessed downlight kit delivering high performance white light optimized for new construction and retrofit applications. Installation is done quickly and easily in most standard eight-inch frames. The top-quality DRT-6 Series provides excellent color rendering (94 CRI) at 4000K. LEDs have virtually no UV or infrared radiation to damage or fade furnishings, art or other objects. Optical Design Optical design efficiently directs light output in an 80° beam angle with low glare.

### Features

- Suitable for indoor use, including dry, damp and wet location environments.
- Not intended for use with emergency light fixtures or exit lights.
- Designed to install in standard 5-6" mounting frames
- Dimming Standard (at 120V line voltage only). See list of compatible dimmers on Page 3. 0-10V Dimming optional
- Power Factor: > 0.95; Total Harmonic Distortion: < 20%
- System Wattage: 13.9

**DRT-6-LED** **15** **40** **UNV** \_\_\_\_\_

### Ordering Information

#### A FIXTURE SERIES

DRT-6-LED      Deco DRT-6 Lumen +

#### E OPTIONS

DM                      0-10V Dimming

#### B WATTAGE/LUMENS

15                      15W/1110<sup>1</sup>

#### C CCT

40                      4000K

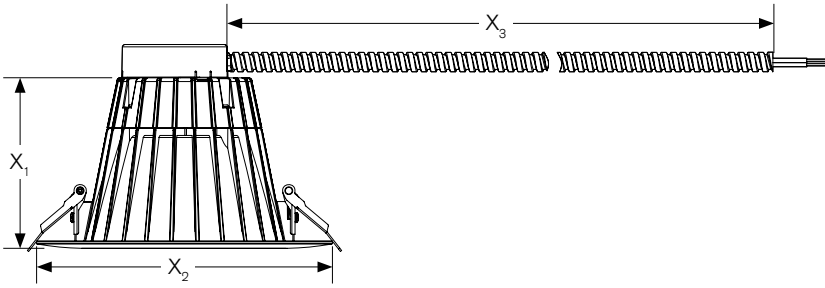
#### D VOLTAGE

UNV                      120-277V<sup>2</sup>

<sup>1</sup> Delivered Lumens (4000K)

<sup>2</sup> Includes 120V Triac dimming

Dimensions



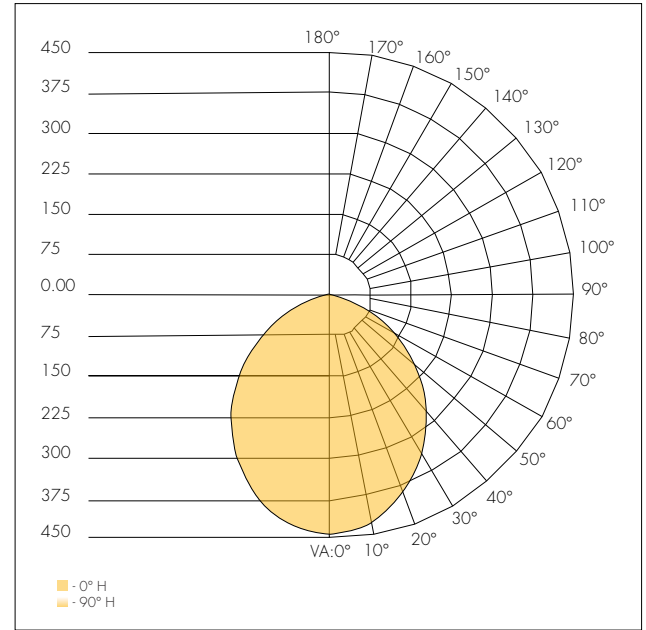
	Inches
X <sub>1</sub>	4.69
X <sub>2</sub>	7.32
X <sub>3</sub>	24.00

Photometrics

Coefficients of Utilization - Zonal Cavity Method  
Effective Floor Cavity Reflectance: 20%

RCC %:	80				70				50				30				10				0
RW %:	70	50	30	0	70	50	30	0	50	30	20	10	50	30	20	10	50	30	20	10	0
RCR: 0	1.19	1.19	1.19	1.19	1.16	1.16	1.16	1.00	1.11	1.11	1.11	1.11	1.06	1.06	1.06	1.06	1.02	1.02	1.02	1.02	1.00
1	1.10	1.06	1.02	.99	1.07	1.04	1.00	.87	.99	.97	.94	.94	.96	.93	.91	.91	.92	.90	.89	.89	.87
2	1.01	.94	.88	.82	.98	.92	.86	.75	.88	.84	.80	.80	.85	.81	.78	.78	.82	.79	.76	.76	.74
3	.93	.83	.76	.70	.90	.82	.75	.65	.79	.73	.68	.68	.76	.71	.67	.67	.73	.69	.66	.66	.64
4	.85	.74	.66	.60	.83	.73	.65	.57	.71	.64	.59	.59	.68	.63	.58	.58	.66	.61	.57	.57	.55
5	.79	.67	.58	.52	.77	.66	.58	.50	.64	.57	.51	.51	.62	.56	.51	.51	.60	.55	.50	.50	.48
6	.73	.60	.52	.46	.71	.60	.52	.44	.58	.51	.45	.45	.56	.50	.45	.45	.55	.49	.45	.45	.43
7	.68	.55	.47	.41	.66	.54	.46	.40	.53	.46	.40	.40	.51	.45	.40	.40	.50	.44	.40	.40	.38
8	.63	.50	.42	.37	.62	.50	.42	.36	.48	.41	.36	.36	.47	.41	.36	.36	.46	.40	.36	.36	.34
9	.59	.46	.39	.33	.58	.46	.38	.33	.45	.38	.33	.33	.44	.37	.33	.33	.43	.37	.33	.33	.31
10	.56	.43	.35	.30	.54	.42	.35	.30	.41	.35	.30	.30	.41	.34	.30	.30	.40	.34	.30	.30	.28

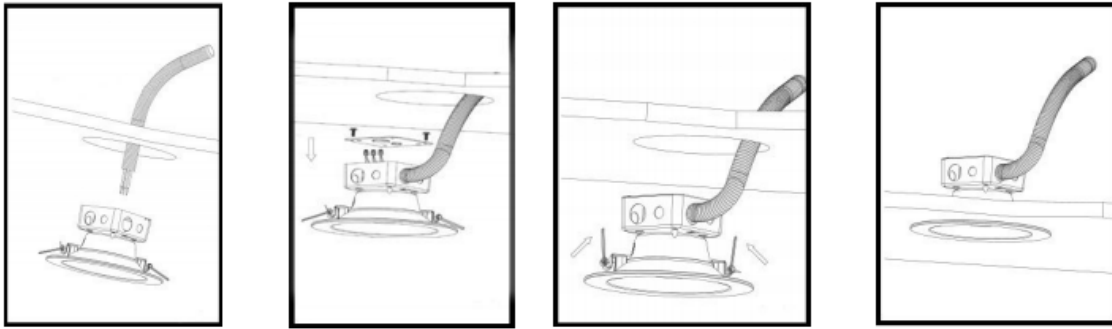
Model 15W 4000K



Zonal Lumen Summary

Zone	Lumens	%Lamp	%Luminaire
0-30	328.6	32.7%	32.8%
0-40	523.8	52.1%	52.2%
0-60	866.8	86.3%	86.4%
50-90	134.5	13.4%	13.4%
70-100	40.8	4.1%	5.1%
90-120	0.10	0%	0%
0-90	1,001.3	99.7%	99.9%
90-180	1.50	1.0%	0.1%
0-180	1,002.8	99.8%	100%

**Installation**



1. Shut off power before installation. Cut a corresponding hole in the ceiling. A template is provided to assist with laying out the hole location. When running the supply wire(s), allow an additional 18 in. of wire at each installation in order to make the electrical connections on the room side of the ceiling hole.
2. Remove the junction box screw(s) holding the junction box cover. Pass the supply wire(s) through the appropriate knockout hole on junction box. Make the electrical connection to fit inside the junction box following the electrical connections. Make sure all connections are secure, tuck all wires inside Junction Box and reinstall junction box cover using junction box screws.
3. Press the top portion of the remodel clips against the side of the housing assembly.
4. Push the housing assembly with the top side of the remodel clips through the hole until tight. Continue to push the housing assembly until the fixture snaps into place with the trim tight against the ceiling surface.

**Compatible Drivers**

Brand	Lutron	Levitron
Models All models are compatible with 120V dimmers	S-600PR-WH	6683
	DVLV-603P-IV	6672
	MALV-600-IV	6631
	CTCL-153P	6633-P
	SLV-600P-WH	1A2305
	NT-1000	1E1205
	S-600P	IPL06
	S-603P	6674
	DV-600P	